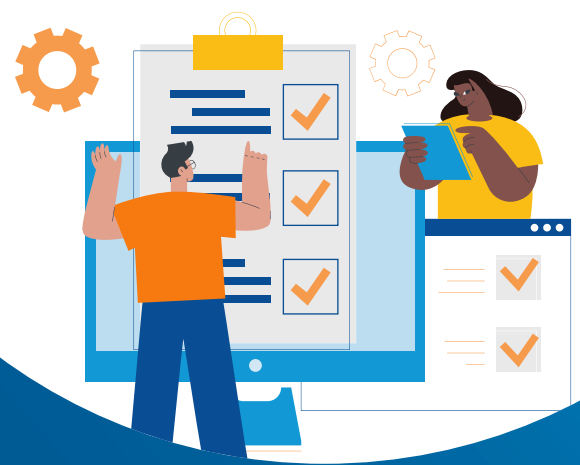


# CAMPUS CLIMATE SURVEYS

## What Makes Grand River Solutions' Surveys Different?

- **Purposeful Questions:** Questions crafted to elicit actionable data and reduce the amount of time it takes to complete the survey (approximately 15-20 minutes).
- **Driven by Change:** Surveys designed to identify areas of improvement and reports that include clear, community-specific recommendations that lead to meaningful change.
- **Designed for Students and Employees:** Each survey question was written using clear and concise language that each audience is familiar with.
- **Optimized Pricing:** The most impact, value, and change at the most competitive pricing. Tiers of prices customized for your institution's needs and sizes.



## Sexual Misconduct Survey

- Prevalence
- Reporting
- Knowledge of Campus Policies and Resources
- Sense of Belonging
- Campus Climate
- Bystander Intervention (*student survey*)
- Student Disclosures (*employee survey*)

## Diversity, Equity, and Inclusion Survey

- Prevalence of Discrimination
- Reporting
- Campus Culture
- Sense of Belonging
- Knowledge of Policies and Resources

## What is Included?

The following items are included with the purchase of one survey. Further customizations and services are available for an additional cost.



### Survey Instrument and Administration

One survey for either students and/or employees on sexual misconduct or DEI.



### Promotional Materials

Digital and printable materials for campuses to use to promote the survey, generate awareness, and drive interest.



### Report

A clear and concise report with practical recommendations to help institutional leaders understand where to take action.



### Raw Data

A CSV file and/or dashboard with all response data, de-identified to preserve participant confidentiality.



### Briefing Session

A presentation of the survey findings and live Question and Answer session.



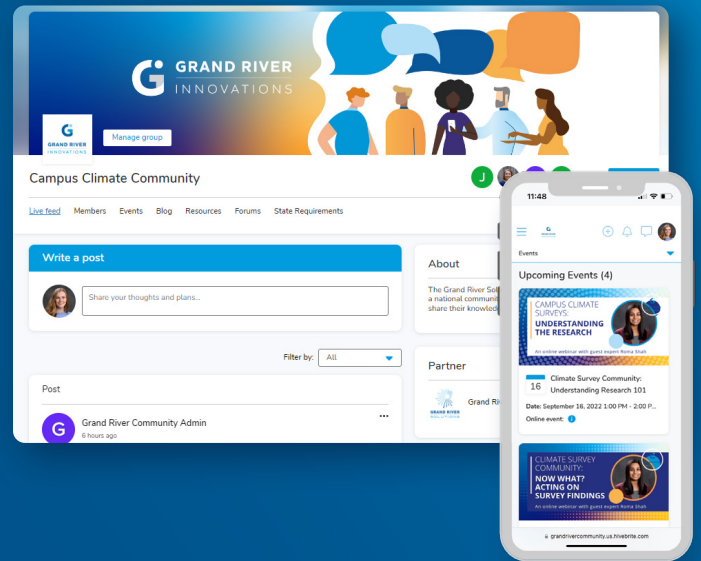
### Community Connect Membership

A complimentary one-year membership to the Campus Climate Community.

# CAMPUS CLIMATE COMMUNITY CONNECT

## What is Grand River Community Connect?

A national community for professionals to connect, learn, and share knowledge, ideas, and best practices. Within the community will be sub-networks dedicated to specific topic areas. The Campus Climate Group will have content tailored to professionals working in campus climate research, response, prevention, and related fields.



## What Can Campus Climate Group Members Expect?

The Climate Community includes trainings, resources, discussion forums, blog posts, and ongoing guidance on how to effectively conduct climate surveys and use survey findings to inform meaningful changes.

## Want to Be Involved?

We want to build a lively community, and we need your help. Join us throughout 2022 at our introductory rate. Because we know that it takes a campus to implement meaningful change, we want to make this available widely to appropriate offices at your institution. Every member institution receives ten seats in the community that can be shared with colleagues in Title IX, Diversity, Equity, and Inclusion, Student Affairs, Prevention and Health Programming, human resources, counsel's office, and beyond.

## How Will the Community Help Prepare Institutions for Implementing and Analyzing Surveys?

- Establish baselines and for understanding your institution's climate
- Utilize research-informed language
- Plan survey implementation
- Generate awareness about the survey and encourage participation
- Analyze data and develop an action plan
- Identify community strengths
- Implement data-driven changes
- Prepare the community for participation in the national survey developed by the Department of Education